

人性化的高性能垂直城市
HUMANIZED HIGH-PERFORMANCE VERTICAL CITIES

Jul. 2021.07

No.019

CN 23-1610 / TU
ISSN 2096-8051

当代建筑

C O N T E M P O R A R Y A R C H I T E C T U R E

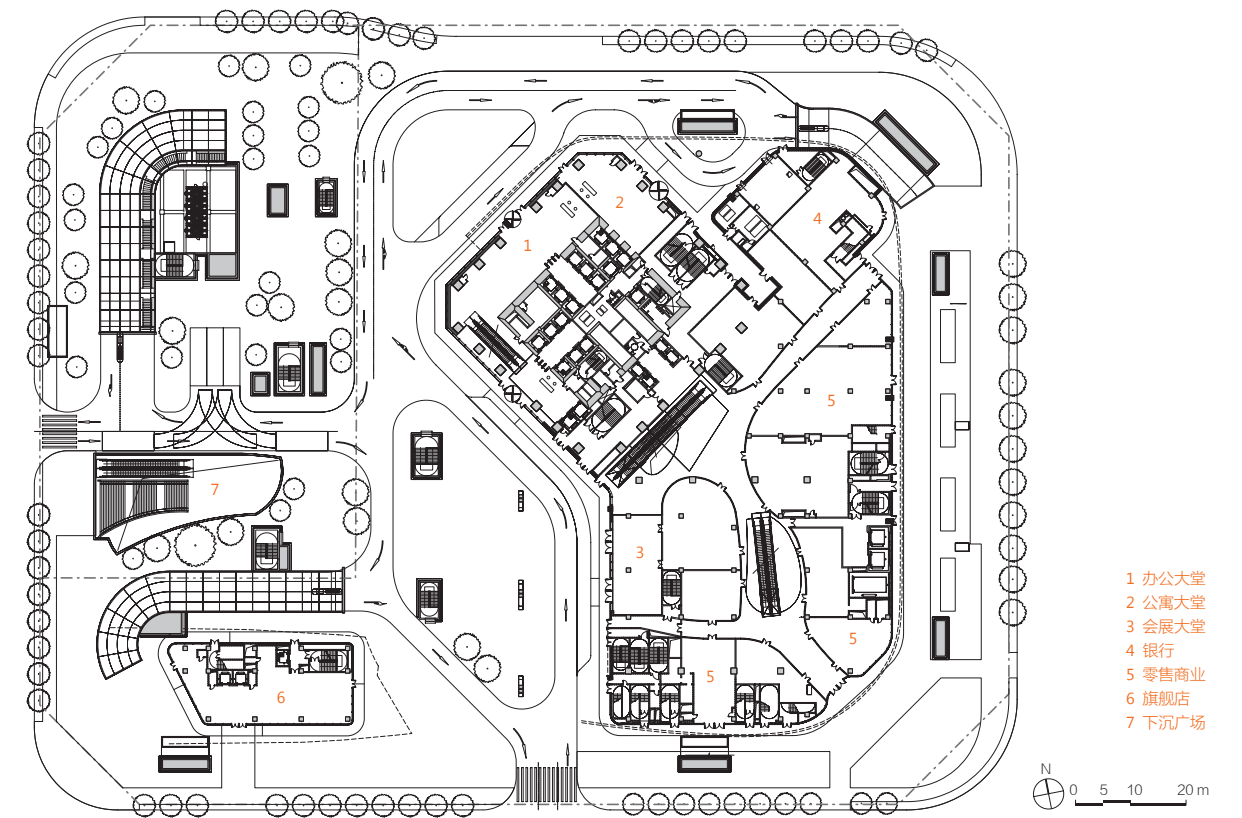
ISSN 2096-8051



9 772096 805210



- 1 犹如蛟龙出海拔地而起
- 2 一层平面图



- 1 办公大堂
- 2 公寓大堂
- 3 会展大堂
- 4 银行
- 5 零售商业
- 6 旗舰店
- 7 下沉广场

2

横琴国际金融中心

HENGQIN INTERNATIONAL FINANCIAL CENTER, ZHUHAI, CHINA

凯达环球建筑设计咨询(北京)有限公司 | Aedas 收稿日期: 2021-03-09

项目名称: 横琴国际金融中心
 业主: 珠海华发城市运营投资控股有限公司(珠海十字门中央商务区建设控股有限公司)
 建设地点: 广东省珠海市
 设计单位: 凯达环球建筑设计咨询(北京)有限公司
 建筑面积: 218 955 m² (地上: 138 158 m², 地下: 80 797 m²)
 建筑设计: 温子先博士(Dr. Andy Wen), 纪达夫(Keith Griffiths)
 建成时间: 2020年
 图纸版权: 凯达环球建筑设计咨询(北京)有限公司
 摄影: CreatAR Images, Terrence Zhang



3



4

“有如蛟龙卷沧海，怒气直欲山前吞”。一座339 m高的建筑毗邻珠江与南海的交汇口岸，蜿蜒盘旋，拔地而起。塔楼一分为四，犹如四条蛟龙冲破藩篱，直冲云霄，盘旋升腾间，俯视整片水域。这座将“蛟龙出海”的神话场景完美再现的超高层，正是凯达环球建筑设计咨询(北京)有限公司(以下简称“Aedas”)最新打造的珠海横琴国际金融中心。

自《粤港澳大湾区发展规划纲要》发布后，三个重要极点城市之一的珠海，成为未来规划发展的重点。而横琴作为珠海，乃至大湾区唯一与港澳陆路相连的国家级战略新区，凭借独有的区位优势正在崛起，成为大湾区发展的重要引擎。同时，作为“一带一路”倡议的前沿阵地，它对自贸时代的建立提供着有力支持。该项目位于未来金融新区横琴岛，东连港澳，西通粤西，北靠珠三角，南依横琴，是珠海与澳门之间“十字”形贯通水域的中心点。

“我们想要在这个蕴藏巨大能量的地块，打造一栋特别的建筑，来象征金融新区的新生，代表兴旺发展的横琴，甚至传递出新时代的中国力量。” Aedas全球设计董事温子先博士(Dr. Andy Wen)如是说。项目集甲级办公、会议展览、商务公寓和商业零售等功能于一体。设计将商业零售区和会议中心布置在便于出入的裙房，将甲级办公空间放于中低层，将商务公寓置于静谧的高层。

设计充分利用地块山海之间的环境优势，选取寓意新生力量的“蛟龙出海”为主题，并从中国古典绘画经典——南宋陈容的《九龙图》中汲取建筑体量灵感，以蜿蜒灵动的裙楼线

条诠释巨龙盘旋，简洁有力的塔楼线条展现破水而出的大气磅礴，在气势逼人的建筑形态中，与不远处的海面相呼应，共同唤起人们对“蛟龙出海”的想象。塔楼的四个部分由裙楼的外侧体块喷薄而出，象征横琴汇集了珠海、澳门、香港和深圳的城市精华，将其融合为一，成为珠江口超级大都会的一颗明珠。

由于珠海有较长时间的台风季，所以建筑采用能降低塔楼风荷载的流线造型，并精心考量建筑坐向和裙房开口朝向，有效降低风阻，减少阵风，提高行人区的舒适性。幕墙玻璃与金属面板流泻而下，成为随风飘动的巨大幕帘，覆盖裙房中高挑的展厅，塑造出极具识别性的入口雨棚。为更好地呈现塔楼向裙楼的自然过渡，设计将体量沿中心轴线和水平轴线进行空间扭转，使裙楼的屋顶得以延展，并成为塔楼外墙，从而将高耸、窄长的塔楼与相对宽阔、低矮的裙楼完美结合，线条灵动优雅。

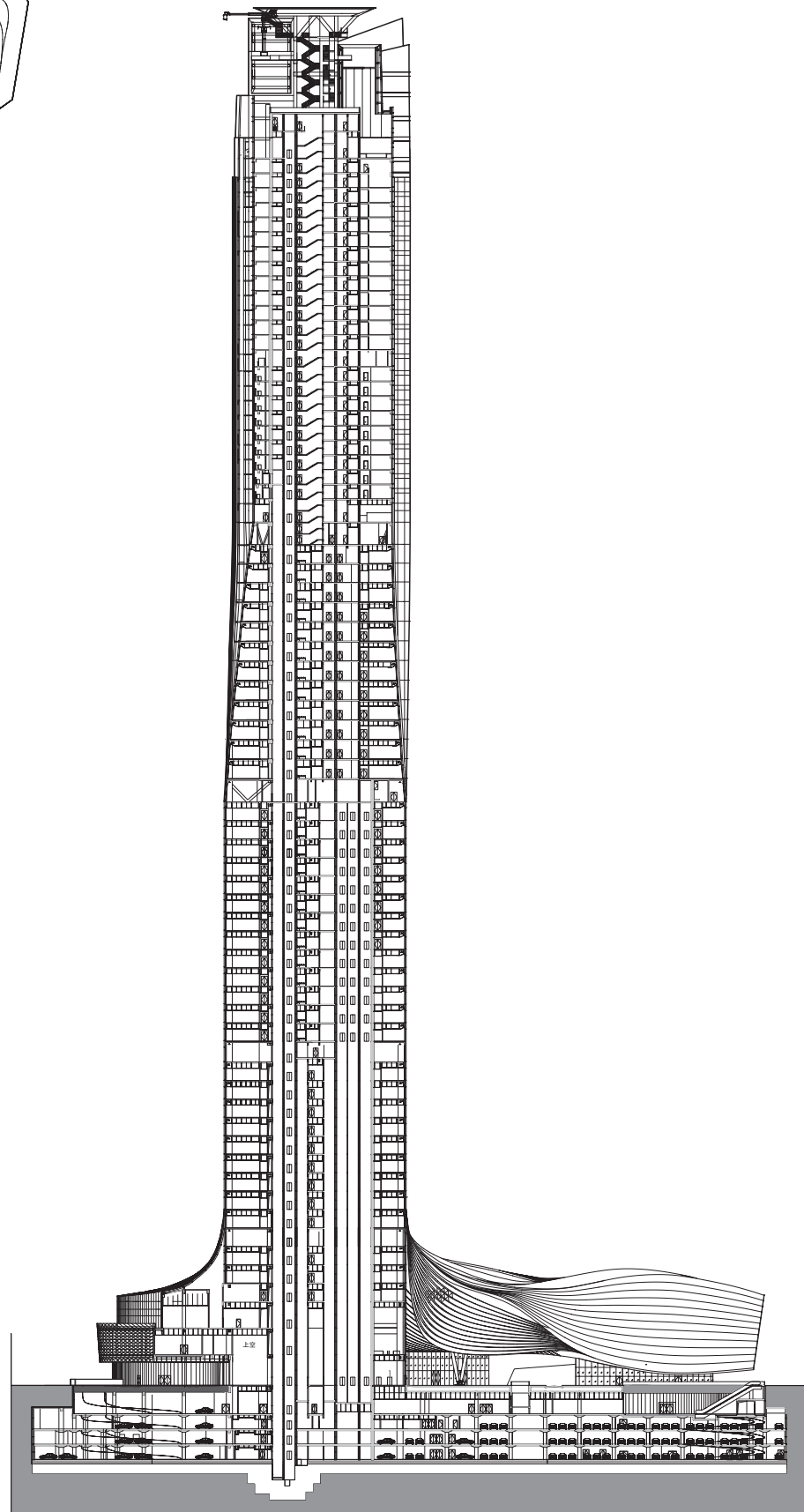
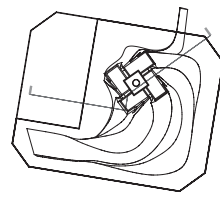
“建筑不只是自由的艺术表达，更应是现实中可落地的方案”。团队通过数字化工具，运用参数化技术将幕墙划分为多个小型基础单元，严格计算板块尺寸，尽可能减少尺寸种类数量，并通过控制设计实现曲线的平滑过渡。

在裙楼和塔楼的转换区，通过调整百叶固定件的角度，在不产生曲面百叶的前提下，实现立面线条的自然流转。裙楼的线条通过合理化拆分的方式，以一段段直线百叶趋近扭曲百叶。以平板玻璃为主，搭配少量单曲面玻璃，完美呈现立体曲线，在实现高精度设计的同时，最大限度地降低建筑成本和建造难度。■

- 3 位于珠海与澳门之间十字形贯通水域的中心点
- 4 完美呈现3D曲线
- 5 极具识别性的入口雨棚

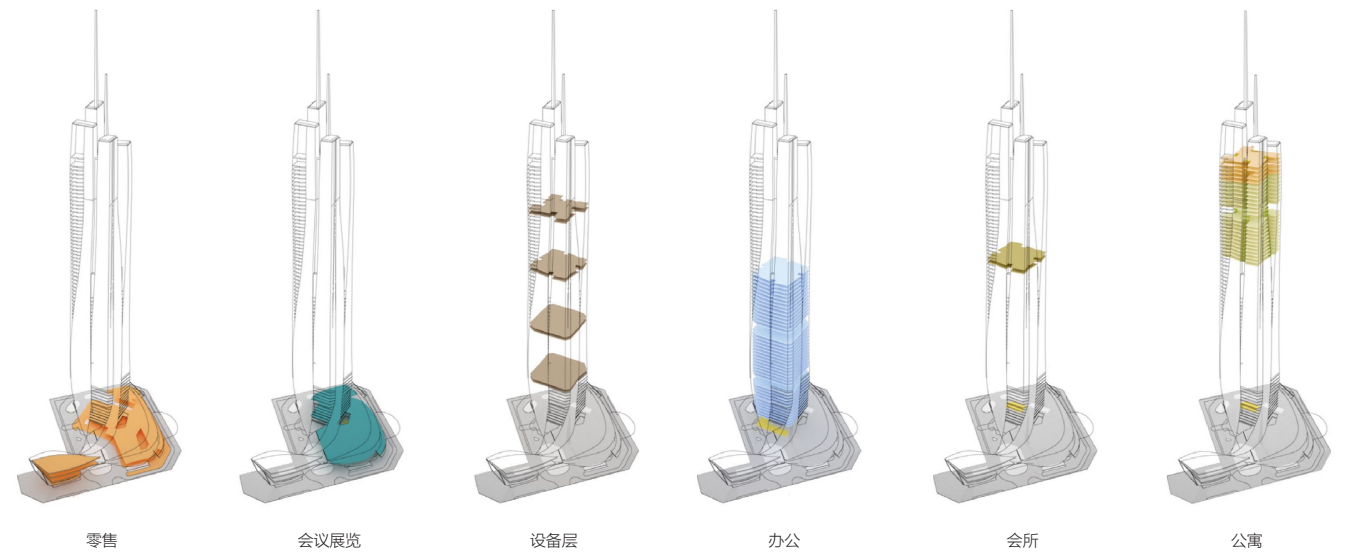


5



6

6 剖面图
7 业态分布
8 线条灵动优雅的裙楼



7



8



Contemporary Architecture (CA) Features Aedas-Designed Hengqin International Financial Center (IFC)

The Contemporary Architecture journal on the Hengqin International Financial Center (IFC) in Zhuhai, designed by Aedas Global Design Principal Dr. Andy Wen.

The iconic 339-metres Hengqin International Financial Centre tower stands at the estuary of the Pearl River and overlooking Macau just across the waters. Designed by Aedas, the spirally rising volume invokes the Chinese myth of flood dragons emerging from the sea – a perfect metaphor for the strength and power of the region.

“The site possesses powerful momentum for future developments. So we imagined this unique building to express the quality of speed, growth and vitality. It resembles prosperity of the new district and rise of the country,” explains Dr. Andy Wen, Aedas Global Design Principal. The development is comprised of mixed programs, including Grade-A office, conference and exhibition amenities, commercial apartments and retail spaces. Conventional and retail spaces are placed in the podium to allow for easy access. Offices are up to the middle of the tower while the apartments are set on top, enjoying the tranquil and scenic sea views.

Inspired by "The Nine Dragons", a famous stroll of Chinese painting from the Song Dynasty, the design embodies the convergence of energy in the architectural form. The traditional totem of the dragon emerging from the sea symbolises new life breaking through the barriers and ceaselessly flourishing into an imposing power. It's transformed into the elegant curves and powerful twists of the tower, complementing the undulating surface of the waters around it. With four vertical blocks shooting up to the sky and merging into the building, the tower itself also becomes a symbol of talents and resources congregating at Hengqin to create a new metropolis in the Greater Bay Area.

The subtropical climate of Zhuhai imposes higher requirements on the tower's wind load to withstand the strong winds during typhoon seasons. The design team meticulously adjusted the building's orientation and entrance to reduce wind drag and improve pedestrians' experience. The fluid elevations are clad in glass and metal panels, pouring down to form a huge curtain swept aside and twisted in the cosmic wind ending in a flurry of horizontally creased envelop surrounding a tall exhibition space and a unique canopy over the entrance. A smooth transition between the super high-rise and the low rise podium is achieved by pulling and twisting the vertical elements around the central axis, turning the tower walls into the podium roof.

“Architecture is not just an artistic expression. It should also be buildable solutions.” Parametric techniques were applied to design the details of the curvy curtain wall. With rigorous calculations, the curtain wall is divided into smaller, standardised units in a limited numbers of dimensional

+

+

+

Aedas

+

+

+

types. The glass panel units, mostly flat, are installed by sections and with gradually shifting angles to form the three-dimensional curve. The design team is thus able to realise the design with highest precision and minimised construction cost.