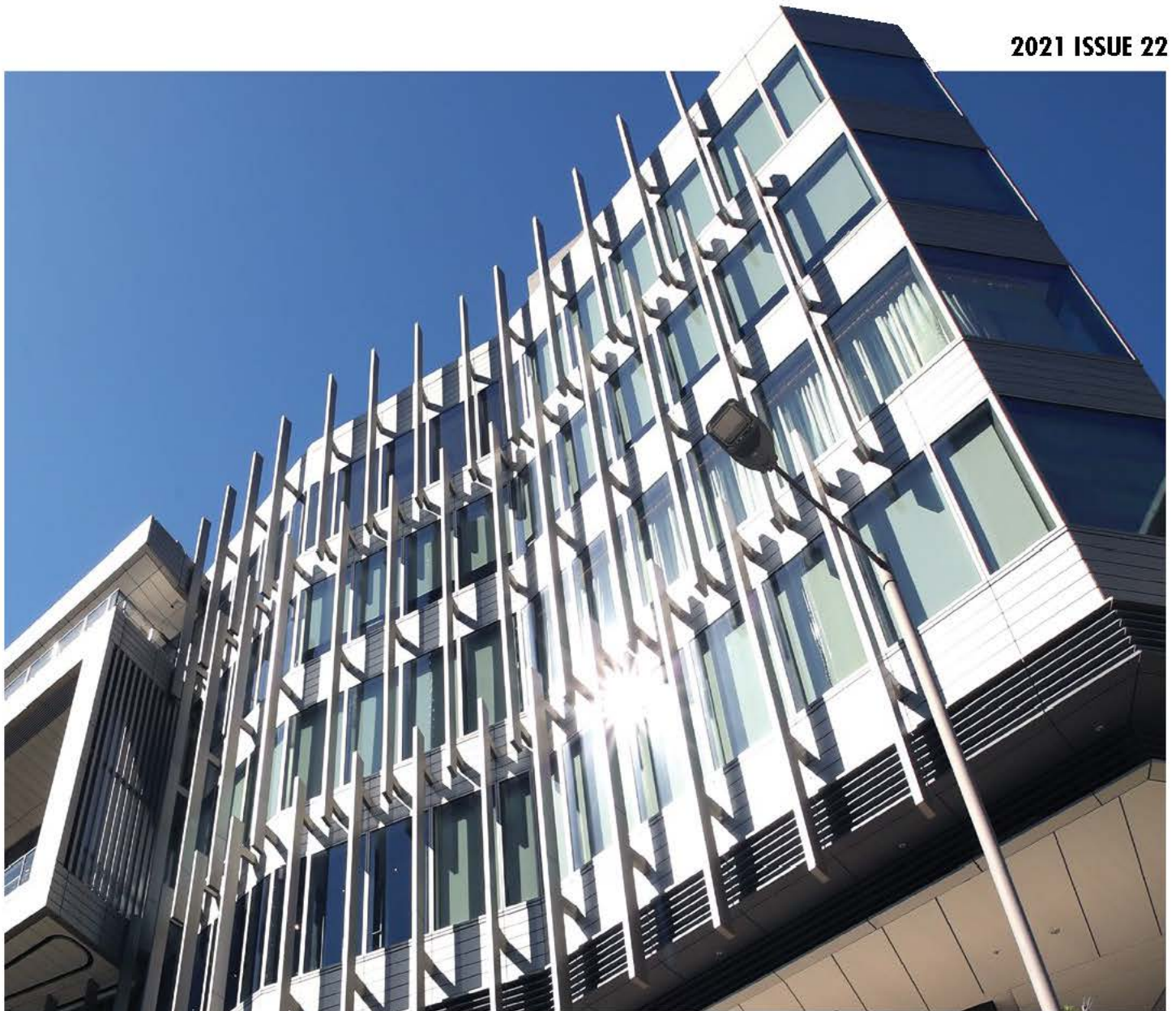


# The FAÇADE

Member's News | Tech Reviews | Project Features

2021 ISSUE 22



**Inhabit** delivers innovative façades for Hong Kong Jockey Club New Clubhouse  
英海特為香港賽馬會會所打造的創新外牆





# IFC

## Zhuhai's tallest building and financial landmark

Aedas recently completed the iconic 339-metre, 218,955 square metre, Hengqin International Financial Centre tower (IFC), in Zhuhai, China, standing at the estuary of the Pearl River and overlooking Macau just across the waters. The spirally rising volume invokes the Chinese myth of flood dragons emerging from the sea – a perfect metaphor for the strength and power of the region. Inspired by "The Nine Dragons", a famous scroll of Chinese painting from the Song Dynasty, the design embodies the convergence of energy in the architectural form.

Information and Images: Aedas

Dr Andy Wen, Aedas Global Design Principal, said: "The site possesses powerful momentum for future developments. So we imagined this unique building to express the quality of speed, growth and vitality. It resembles prosperity of the new district and rise of the country." The project is located in Zhuhai's Hengqin Island, a future financial district connecting Hong Kong, Macao and other major cities in the Greater Bay Area.

### Program layout

The traditional totem of the dragon emerging from the sea symbolises new life breaking through the barriers and ceaselessly flourishing into an imposing power. It's transformed into the elegant curves and powerful twists of Hengqin International Financial Centre tower, complementing the undulating surface of the waters around it. With four vertical blocks shooting up to the sky and merging into the building, the tower itself also becomes a symbol of talents and resources congregating at Hengqin to create a new metropolis in the Greater Bay Area.

The development is comprised of mixed programs, including Grade-A office, conference and exhibition amenities, commercial apartments and retail spaces. Conventional and retail spaces are placed in the podium to allow for easy access.

Offices are up to the middle of the tower while the apartments are set on top, enjoying the tranquil and scenic sea views.

The subtropical climate of Zhuhai imposes higher requirements on the tower's wind load to withstand the strong wind during typhoon seasons. The design team meticulously adjusted the building's orientation and entrance to reduce wind drag and improve pedestrians' experience. The fluid elevations are clad in glass and metal panels, pouring down to form a huge curtain swept aside and twisted in the cosmic wind ending in a flurry of horizontally creased envelop surrounding a tall exhibition space and a unique canopy over the entrance. A smooth transition between the super high-rise and the low-rise podium is achieved by pulling and twisting the vertical elements around the central axis, turning the tower walls into the podium roof.

Parametric techniques were applied to design the details of the curvy curtain wall. With rigorous calculations, the curtain wall is divided into smaller, standardised units in a limited number of dimensional types. The glass panel units, mostly flat, are installed by sections and with gradually shifting angles to form the three-dimensional curve. The design team is thus able to realise the design with highest precision and minimised construction cost.

# 珠澳 第一高樓 橫琴國際 金融中心

Aedas 最近在中國珠海完成了標誌性的 33 米、218,955 平方米的橫琴國際金融中心大廈 (IFC)，它位於珠江入海口，俯瞰一水之隔的澳門。螺旋上升的體積喚起了中國神話中蛟龍出海的神話——這是對該區強大力量的完美隱喻。設計靈感來自宋代著名國畫《九龍圖》，在建築形式上體現了能量的匯聚。

“我們想要在這個蘊藏巨大能量的地塊，打造一棟特別的建築，來象徵金融新區的新生，代表興旺發展的橫琴，甚至傳遞出新時代的中國力量。” Aedas 全球設計董事 Dr. Andy Wen (溫子先博士) 如是說。該項目正位於未來金融新區橫琴島，東連港澳、西通粵西、北靠珠三角、南依橫琴，是珠海與澳門之間十字形貫通水域的中心點。

設計充分利用地塊山海之間的環境優勢，選取寓意著新生力量的“蛟龍出海”為主題，並從中國古典繪畫經典南宋陳容《九龍圖》中汲取建築體量靈感，以蜿蜒靈動的裙樓線條詮釋巨龍盤旋，簡潔有力的塔樓線條展現破水而出的大氣磅礴，在氣勢逼人的建築形態中，與不遠處的海面相呼應，共同喚起人們對“蛟龍出海”的想像。塔樓的四個部分由裙樓的外側體塊噴薄而出，象徵著橫琴匯集了珠海、澳門、香港和深圳的城市精華，將其融合為一，成為珠江口超級大都會的一顆明珠。項目集甲級辦公、會議展覽、商務公寓和商業零售等功能於一體。設計將商業零售和會議中心在便於出入的裙房，甲級辦公空間放於中低層，商務公寓置於靜謐的高層。

由於珠海時間較長的颱風季，建築採用流線造型以降低塔樓風荷載，並精心考量建築坐向和裙房開口朝向，有效降低風阻，減少陣風，提高行人區的舒適性。幕牆玻璃與金屬面板流瀉而下，成為隨風飄動的巨大幕簾，覆蓋裙房中高挑的展廳，塑造出極具識別性的入口雨棚。為更好地呈現塔樓向裙樓的自然過渡，設計將體量沿中心軸和水平軸空間扭轉，使裙樓的屋頂得以延展升騰為塔樓外牆，從而將高聳窄長的塔樓與相對寬闊低矮的裙樓完美結合，線條靈動優雅。

團隊通過數字化工具，運用參數化技術將幕牆劃分為多個小型基礎單元，嚴格計算板塊尺寸，盡可能減少尺寸種類數量，並通過控制設計實現曲線的平滑過渡。在裙樓和塔樓的轉換區，通過調整百葉固定件的角度變化，在不產生曲面百葉的前提下實現立麵線條的自然流轉；裙樓的線條通過合理化拆分的方式，以一段段直線百葉趨近扭曲百葉。最終以平板玻璃為主搭配少量單面玻璃完美呈現了 3D 曲線，在高精度實現設計的同時，最大程度降低建築成本和建造難度。



Images on this page: Terrance Zhang

+ +  
Aedas  
+ +